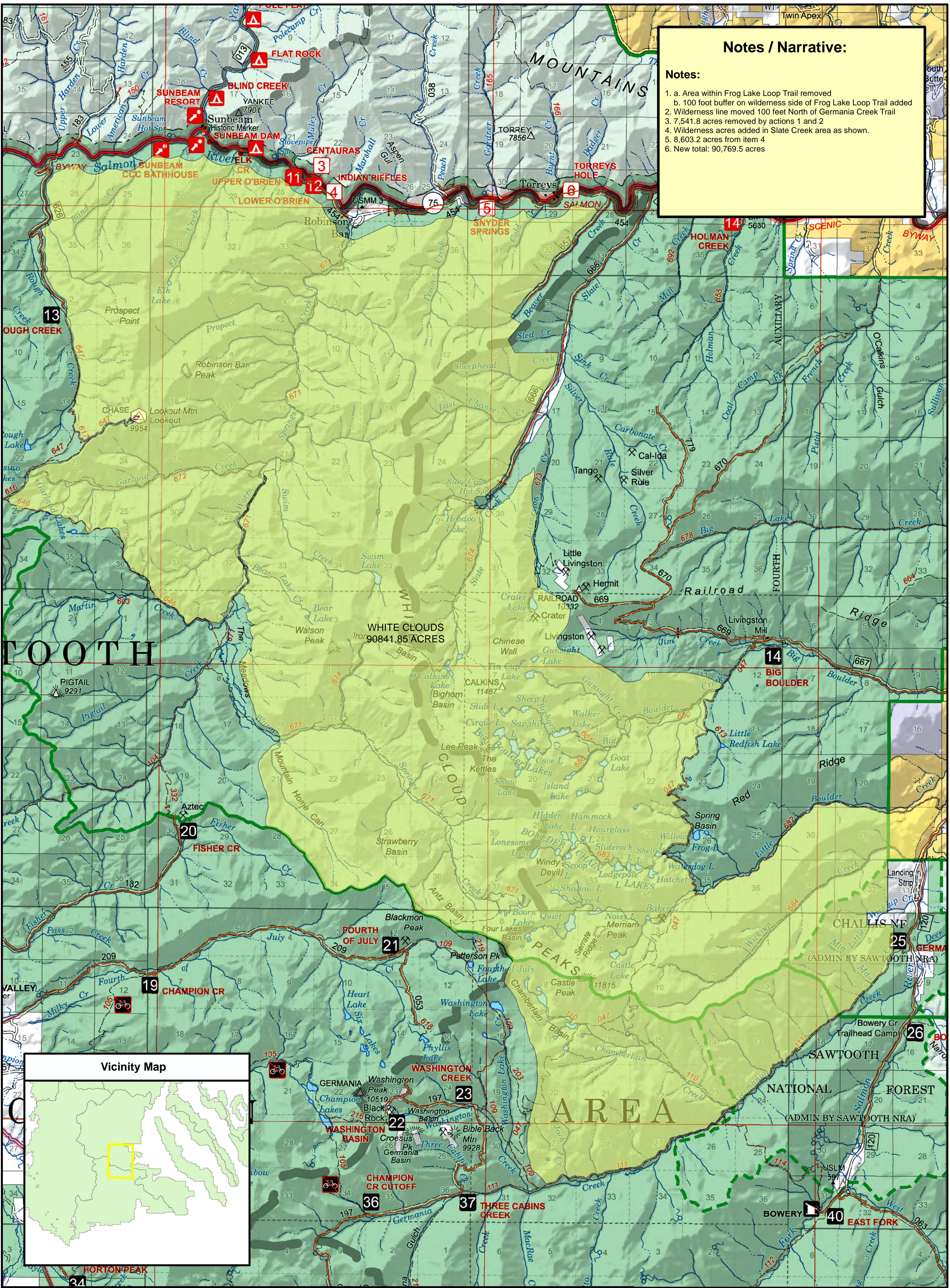


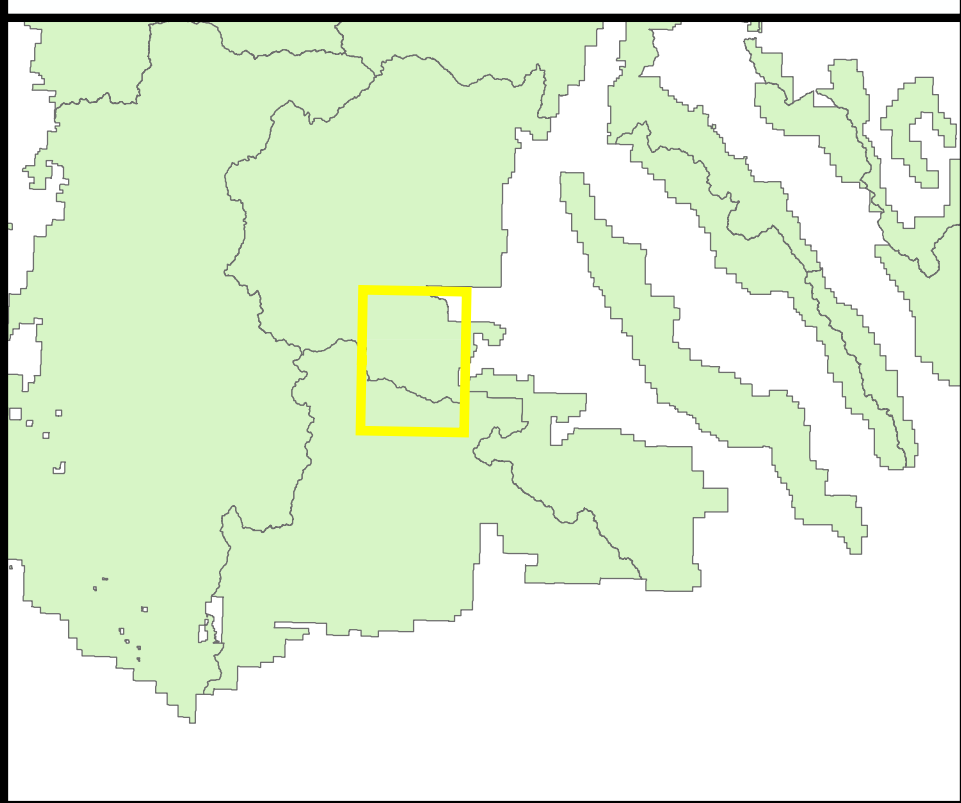
Notes / Narrative:

Notes:

1. a. Area within Frog Lake Loop Trail removed
- b. 100 foot buffer on wilderness side of Frog Lake Loop Trail added
2. Wilderness line moved 100 feet North of Germania Creek Trail
3. 7,541.8 acres removed by actions 1 and 2
4. Wilderness acres added in Slate Creek area as shown.
5. 8,603.2 acres from item 4
6. New total: 90,769.5 acres



Vicinity Map



References

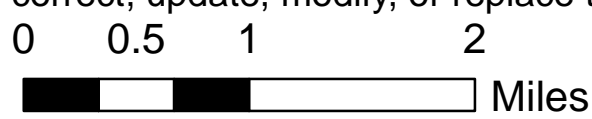
Map data sources include the Intermountain Region Automated Lands Program land status data, USGS Federal Lands data, and data created by Sawtooth GIS personnel to represent the proposed Wilderness area.

Copies of this map are available for public inspection in the Office of the Regional Forester, Intermountain Region, USDA Forest Service, 324 25th Street, Ogden, Utah.

For additional information please contact Congressman Simpson's Staff at 208-334-1953

Disclaimer

The USDA Forest Service makes no warranty, expressed or implied regarding the data displayed on this map, and reserves the right to correct, update, modify, or replace this information without notification.



Legend

- Whitecloud Wilderness Proposal
- Roads open to motorized use
- Trails open to motorized use

White Clouds Wilderness Area - Proposed

This proposed National Wilderness Area is located wholly or partially in Townships: T8N R15E, T8N R16E, T8N R17E, T9N R15E, T9N R16E, T9N R17E, T10N R14E, T10N R15E, T10N R16E, T11N R14E, T11N R15E, T11N R16E, Boise Meridian.