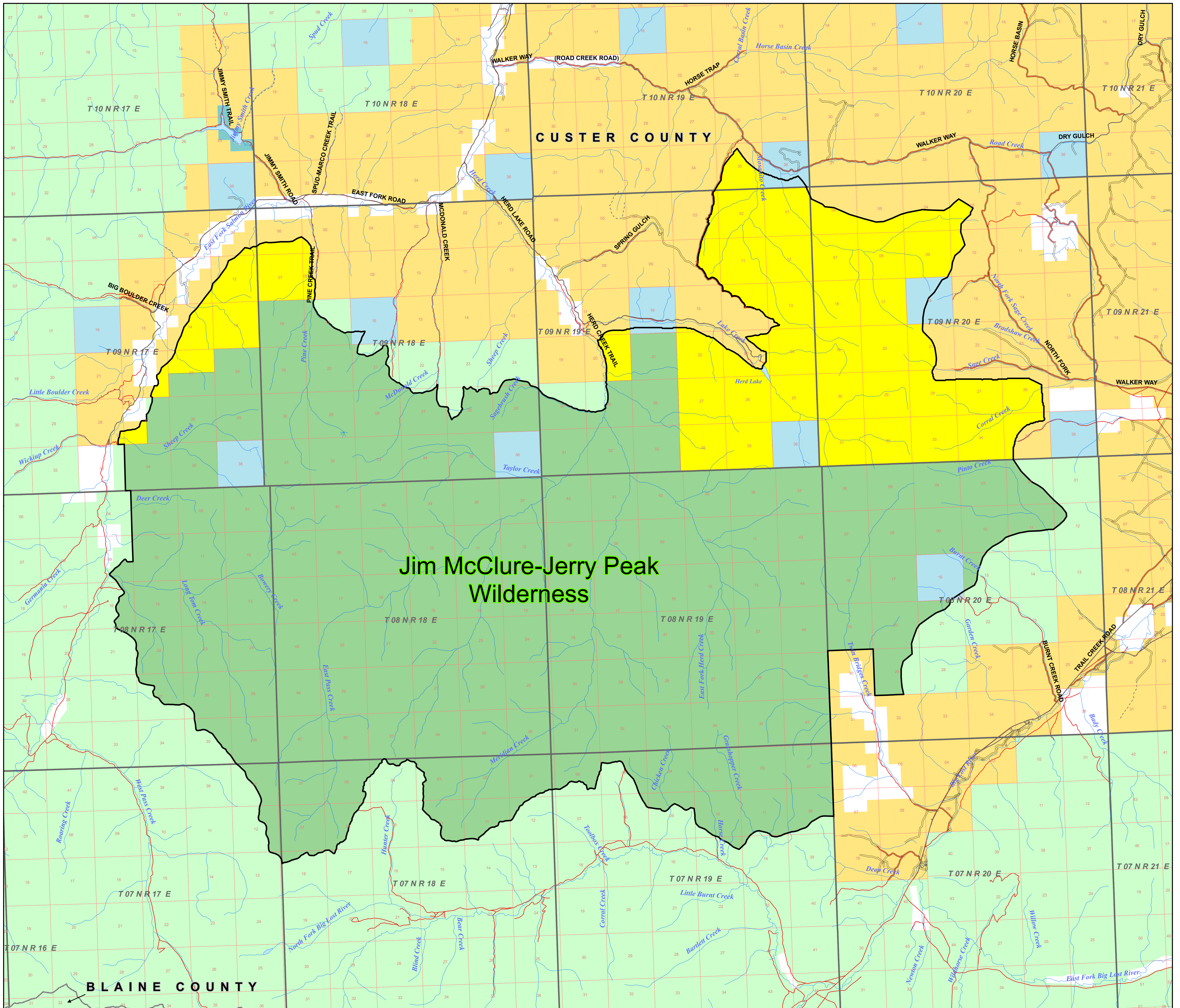


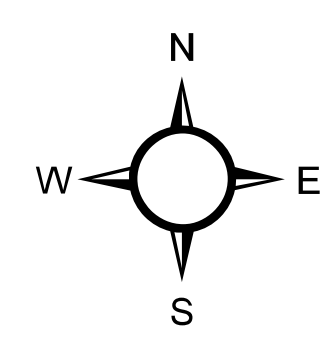
Jim McClure-Jerry Peak Wilderness

February 21, 2015

This map prepared at the request of Congressman Mike Simpson.



Jim McClure-Jerry Peak
Wilderness



0 1 2 3 4 Miles

Map scale 1:50,000 when plotted at 34" x 44"
Map projection: UTM 11 NAD 1983

Legend

- Jim McClure-Jerry Peak Wilderness (BLM)
- Jim McClure-Jerry Peak Wilderness (USFS)

BLM Motorized Roads (Source: BLM)

- Road
- Primitive Road
- Trail
- All road types

Note: two roads datasets are used because the BLM Motorized Roads data is more accurate for BLM lands, and the other roads data shows roads including non-BLM land. Roads within the proposed wilderness boundary are not displayed.

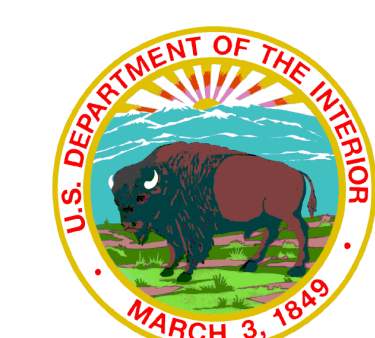
- Water Body
- Stream
- County
- Township
- Section

Surface Management Agency:

- BLM
- PRIVATE
- STATE
- STATE FISH & GAME
- USFS

No warranty is made by the Bureau of Land Management. The accuracy, reliability, or completeness of these data for individual use or aggregate use with other data is not guaranteed.

Data displayed and source--
Jerry Peak Wilderness: BLM Idaho State Office
County, township, section, and surface management agency:
BLM Idaho GIS Corporate Database
BLM Motorized Roads: BLM Challis Field Office Travel Management Plan, 2008
Roads: Idaho Transportation Department, US Geological Survey, or US Forest Service, ~1970 - 2005
Hydrography: US Geological Survey National Hydrography Dataset



U.S. Department of the Interior
Bureau of Land Management
Cartography by the Idaho State Office

