

Columbia Basin Initiative

The Columbia Basin Initiative Major Issues

- BPA is Experiencing Serious Financial Challenges
- Agriculture and Power Companies face Never Ending Lawsuits
- Idaho's Salmon and Steelhead Numbers are Near Extinction

Status Quo Isn't Working



An opportunity to break the unsustainable status quo

- **Let's end the "salmon wars"**
 - Billions of dollars have been spent on litigation and failed mitigation and recovery plans.
 - We can stop the never-ending lawsuits.
 - We can have people and fish - this is not people vs. fish.
- **This is about more than salmon and dams**
 - This is an opportunity to create our own path forward - to invest in agriculture, clean energy, local economies, and more.



An opportunity to expand agriculture infrastructure



- **The infrastructure investments in this comprehensive proposal would allow producers to affordably maintain our region's diverse agricultural industries through:**
 - Funding for animal nutrient research and development \$400M
 - A 25-year voluntary watershed program to improve and enhance water quality and temperature
 - Snake River Transportation - \$3.6B
 - Improving grain transportation network
 - Shippers, handlers, and port facility adjustments
 - Rail and port development in the Tri-Cities and Lewiston-Clarkston to enhance the commodity transportation system
 - Reconfigured irrigation that is compatible with a restored lower Snake River

We Can Replace the Power



- **\$10B** would be made available to BPA for clean, firm power replacement.
- Replacement power must be online before the first dam is bypassed.
- Pump storage and new battery technology and small modular reactors will create an effective combination for replacing energy.
- The concept creates the “Snake River Center for Advanced Energy Storage” co-located at Pacific Northwest National Laboratory and the new Lewiston-Clarkston Research Technology Campus.
- **Transmission Resiliency and Optimization \$2B**

Benefits for Bonneville Power Administration (BPA)

- **Borrowing cap with Treasury increases from \$7.7B to \$15B**
- **Fish mitigation responsibility met with a capped annual \$600M payment, net \$480M**
- **Certain legacy costs become 4(h)(10)(C) eligible**
- **Removed from direct fish management responsibilities**

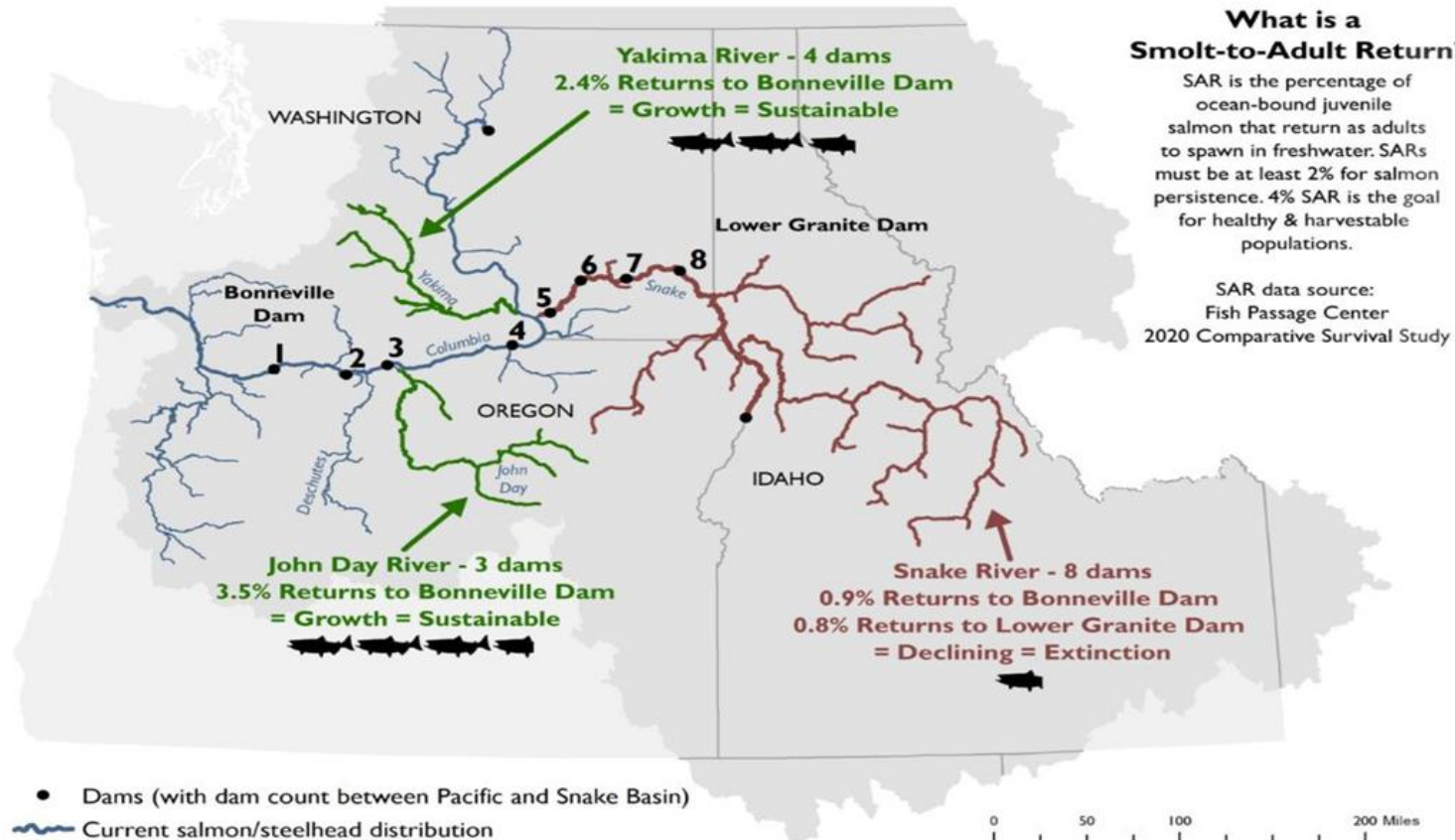


The State of Snake River Salmon



- **Over the past 30 years, more than \$17 billion have been spent on failed fish recovery efforts.**
 - More salmon and steelhead are listed under the Endangered Species Act today than in 1980.
- **Today, all Snake River salmon and steelhead are listed as threatened or endangered.**

Wild Chinook Salmon Smolt-to-Adult Returns in the Columbia River Basin



We Can End the 'Salmon Wars'

- This concept would lock in ALL major dams that produce more than 5 Megawatts in the Columbia, Snake and Willamette Basins, extending their licenses from 35-50 years.
- It would also halt all litigation concerning these same dams related to Endangered Species Act, Clean Water Act, and the National Environmental Policy Act for 35 years.
- **Dam Mitigation and Indemnification Program**
 - Voluntary removal or mitigation of dams and diversions - **\$500M**
 - Liability protection for dam owners - **\$500M**



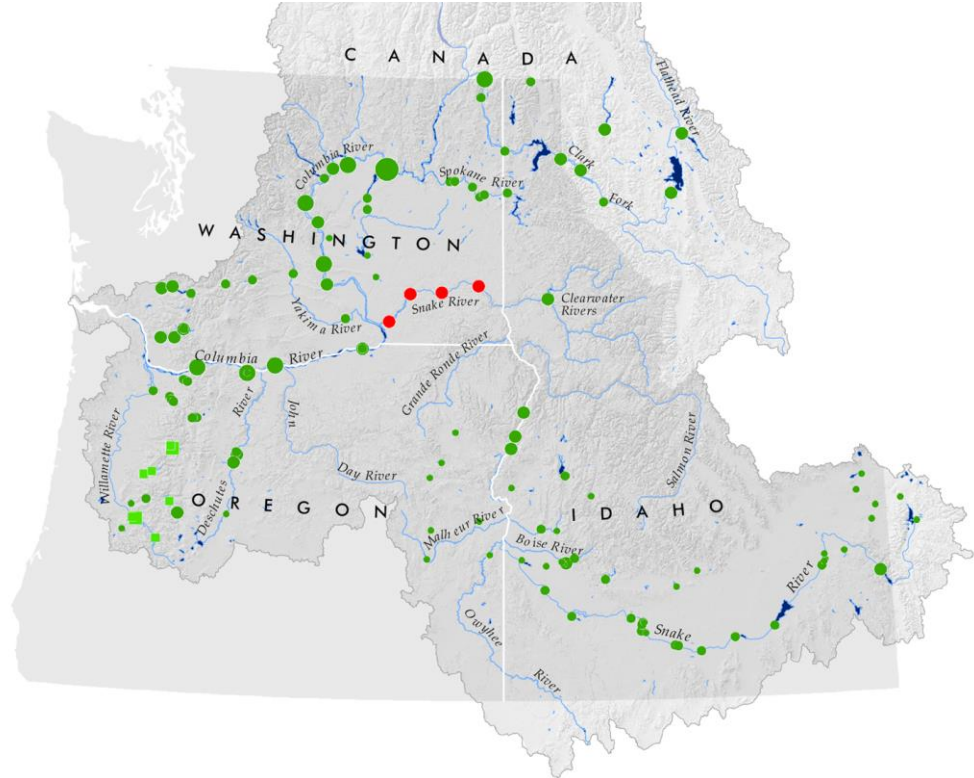
Photo by Sora Shimazaki

Columbia Basin Dams Impacted

- Dams subject to FERC license extension and/or litigation moratorium.
- Willamette federal dams potentially deauthorized for electricity generation.
- Lower Snake River dams to be breached.

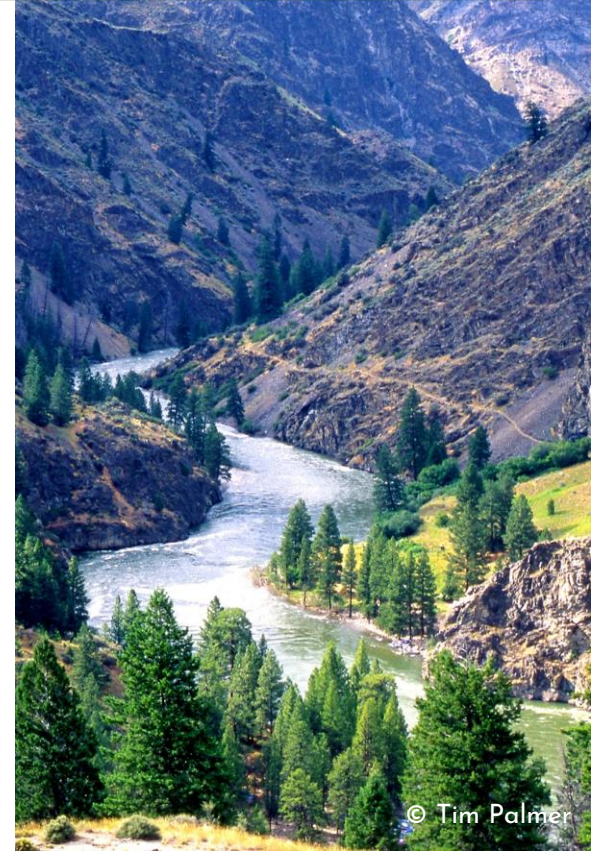
Dam Hydroelectric Capacity

- 0 - 10 MW
- 10 - 100 MW
- 100 - 1000 MW
- 1000 - 2500 MW
- 2500+ MW



Bypassing 4 dams - Restoring Lower Snake River

- **Removing Earthen Berms & Sediment - \$1.4B (2030-2031)**
- **Sediment Mitigation Fund - \$400M**
- **Lower Snake River Corridor Restoration Fund - \$75M**
- **Lower Snake River Corridor Road & Rail Study & Mitigation - \$300M**



Improving Water Quality



- **Watershed Partnerships - \$3B**
 - Voluntary working groups to improve water quality and quantity
 - Snake River (**\$700M**)
- **Animal/Nutrient Management - \$1.6B**
 - Idaho Snake River Basin Animal Nutrient Research & Development - **\$400M**

Investing in Communities

- **Lewiston-Clarkston Waterfront Restoration** - \$150M
- **Snake River Center for Advanced Energy Storage** - \$1.25B
 - DOE program to develop large scale storage methods for renewable generation
- **Economic Development and Compensation Funds** - \$875M
 - Including recreation, tourism, and commercial industries
- **Designation of a Lower Snake River National Recreation Area**

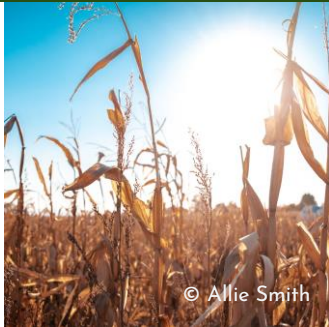


An opportunity to create our own path forward

This is a once-in-a-lifetime **opportunity** to shape an investment package that:

- Brings abundant salmon and steelhead to Idaho
- Maintains Idaho's agricultural legacy
- Secures reliable and affordable clean energy
- Honors the commitments to Northwest tribes
- Strengthens local economies

We can secure a more prosperous and sustainable Northwest future.



Commonly Asked Questions

- What about predators?
- What about Idaho Water (487,000 acre feet) being flushed down river annually?
- What about power Idaho gets from those 4 Washington dams?
- What dams need to be bypassed? Are they used for flood control?
 - Lower Granite Dam
 - Little Goose Dam
 - Lower Monumental Dam
 - Ice Harbor Dam
- What happens if we just fight?
 - Spotted Owl
 - Klamath Basin



Photo by Olya Kobruseva

Comments, Questions, Suggestions

Email: simpson.concept@mail.house.gov

Website: Simpson.house.gov/salmon